

NU & NX BEARINGS

Self-lubricating & Prelubricated



TABLE OF CONTENTS

	PAGE NUMBER
Properties & Part Number Example	1
NU INCH	
NU Bearings - Up to 2 Inch Bore	2
NU Flanged Bearings	3
NU Bearings - Over 2 Inch Bore	4, 5
NU Thrust Washers	6
NU METRIC	
NU Bearings - Up to 45mm Bore	8
NU Flanged Bearings	9
NU Bearings - Over 45mm Bore	10
NU Thrust Washers	11
NX INCH	
NX Bearings	12
NX Thrust Washers	13
NX METRIC	
NX Bearings - Up to 110mm Bore	14
NX Bearings - Over 110mm Bore	15
NX Thrust Washers	15
Fraction/Inch/Metric Conversion Table	16



NU Self-lubricating



NX Prelubricated

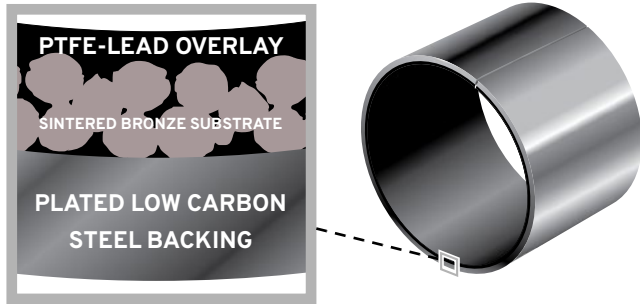


National Precision
 Copyright 2024
 08-29-24

Warranty, Errors & Omissions

National Precision assumes no responsibility for errors or omissions in this catalog. National Precision reserves the right to change information or specifications without notice. Application and use of this product is the sole responsibility of the user, however our engineering personnel will advise you of guidelines for the proper parameters of use of the product. National Precision warrants the product to be free from defects in materials and workmanship only. Seller only obligation hereunder is to either repair or replace the defective product or work within 12 months of product delivery to our customers. No other warranties are expressed or implied in fact or by law. National Precision Bearing Group is not liable for associated costs of work done by the buyer involving our product, or altered product.

NU Self-lubricating



Loads - P

- Dynamic loads up to 20,000 PSI
- Static loads up to 36,000 PSI
- Compressive yield strength of 44,000 PSI

Temperature Range

- -328° F to +536° F

Speed - V

- Up to 1000 FPM unlubricated
- Up to 2000 FPM lubricated

Coefficient of Friction

- 0.02 - 0.20 Static/Dynamic

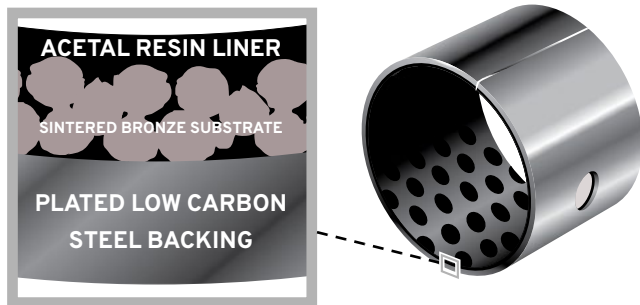
Performance - PV

- PV to 50,000 PSI - FPM - continuous operation
- PV to 100,000 PSI - FPM - intermittent operation

Shaft Finish

- A surface finish of better than 16 micron inches is recommended
- Above 32 micro inches, bearing life is reduced by more than 50%

NX Prelubricated



Loads - P

- Dynamic loads up to 20,000 PSI
- Static loads up to 36,000 PSI
- Compressive yield strength of 44,000 PSI

Temperature Range

- -40° F to +210° F intermittent to 260° F

Speed - V

- Up to 100 FPM greased
- Up to 500 FPM in oil

Coefficient of Friction

- 0.015 - 0.15 Static
- 0.01 - 0.10 Dynamic

Performance - PV

- PV to 80,000 PSI - FPM - continuous operation

Shaft Finish

- A surface finish of better than 16 micron inches is recommended

Part Number Example

Inch

112	NU	80	
BORE	TYPE	LENGTH	IN 1/16 INCH
NU or NX = Inch Bearing FNU = Flanged Inch Bearing			
IN 1/16 INCH			

Examples: 112 NU 80 = 7 inch x 5 inch NU Bearing
 24 FNU 32 = 1 1/2 inch x 2 inch NU Flanged Bearing

Metric

MB	150	100	NX
BORE	TYPE	LENGTH	IN MM
IN MM			
MB = Metric Bearing FMB = Flanged Metric Bearing			

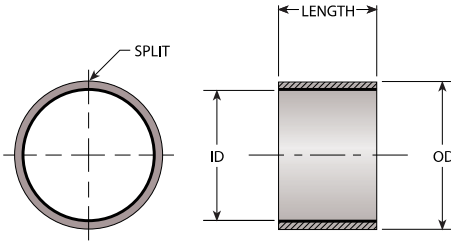
Examples: MB 150 100 NX = 150 mm x 100 mm NX Bearing
 FMB 06 04 NU = 6 mm x 4 mm NU Flanged Bearing

NU Inch

Up to 2" Bore



Reliable.
Responsive.
Relentless.



NOMINAL BEARING BORE ID	RECOMMENDED		INSTALLED BEARING ID*	BEARING LENGTH	PART NUMBER	BEARING LENGTH	PART NUMBER	BEARING LENGTH	PART NUMBER	BEARING LENGTH	PART NUMBER	BEARING LENGTH	PART NUMBER	BEARING LENGTH	PART NUMBER
	SHAFT DIA	HOUSING DIA													
1/8	.1243 .1236	.1873 .1878	.1243 .1268	1/8	02NU02	3/16	02NU03								
5/32	.1554 .1547	.2186 .2191	.1556 .1581	5/32	025NU025	1/4	025NU04								
3/16	.1865 .1858	.2497 .2503	.1867 .1893	3/16	03NU03	1/4	03NU04	3/8	03NU06						
1/4	.2490 .2481	.3122 .3128	.2492 .2518	1/4	04NU04	3/8	04NU06								
5/16	.3115 .3106	.3747 .3753	.3117 .3143	3/8	05NU06	1/2	05NU08								
3/8	.3740 .3731	.4684 .4691	.3742 .3769	3/16	06NU03	1/4	06NU04	3/8	06NU06	1/2	06NU08	5/8	06NU10	3/4	06NU12
7/16	.4365 .4355	.5309 .5316	.4367 .4394	1/2	07NU08	3/4	07NU12								
1/2	.4990 .4980	.5934 .5941	.7792 .5019	1/4	08NU04	3/8	08NU06	1/2	08NU08	5/8	08NU10	3/4	08NU12	7/8	08NU14
9/16	.5615 .5605	.6559 .6566	.5617 .5644	3/8	09NU06	1/2	09NU08	5/8	09NU10	3/4	09NU12				
5/8	.6240 .6230	.7184 .7192	.6242 .6270	1/4	10NU04	1/2	10NU08	5/8	10NU10	3/4	10NU12	7/8	10NU14	1	10NU16
1 1/16	.6865 .6855	.7809 .7817	.6867 .6895	7/8	11NU14										
3/4	.7491 .7479	.8747 .8755	.7493 .7525	1/4	12NU04	3/8	12NU06	1/2	12NU08	5/8	12NU10	3/4	12NU12	1	12NU16
1 3/16	.8116 .8104	.9372 .9380	.8118 .8150	3/4	13NU12	1 1/8	13NU18								
7/8	.8741 .8729	.9997 1.0005	.8743 .8775	1/4	14NU04	3/8	14NU06	3/4	14NU12	1	14NU16	1 1/4	14NU20		
1	.9991 .9979	1.1247 1.1255	.9993 1.0025	3/8	16NU06	1/2	16NU08	3/4	16NU12	1	16NU16	1 1/4	16NU20	1 1/2	16NU24
1 1/8	1.1238 1.1226	1.2808 1.2818	1.1240 1.1278	3/8	18NU06	5/8	18NU10	3/4	18NU12	1	18NU16				
1 1/4	1.2488 1.2472	1.4058 1.4068	1.2490 1.2528	3/8	20NU06	3/4	20NU12	7/8	20NU14	1	20NU16	1 1/4	20NU20	1 3/4	20NU28
1 3/8	1.3738 1.3722	1.5308 1.5318	1.3740 1.3778	3/4	22NU12	1	22NU16	1 1/2	22NU24	1 3/4	22NU28				
1 1/2	1.4988 1.4972	1.6558 1.6568	1.4990 1.5028	1/2	24NU08	1	24NU16	1 1/8	24NU18	1 1/4	24NU20	1 1/2	24NU24	2	24NU32
1 5/8	1.6238 1.6222	1.7808 1.7818	1.6240 1.6278	1	26NU16	1 1/2	26NU24								
1 3/4	1.7487 1.7471	1.9371 1.9381	1.7489 1.7535	1	28NU16	1 1/2	28NU24	2	28NU32						
1 7/8	1.8737 1.8721	2.0621 2.0633	1.8739 1.8787	3/4	30NU12	1	30NU16	2 1/4	30NU36						
2	1.9987 1.9969	2.1871 2.1883	1.9989 2.0037	1/2	32NU08	1	32NU16	1 1/2	32NU24	1 3/4	32NU28	2	32NU32	2 1/2	32NU40

*When installed in a rigid steel or cast-iron housing

Length Tolerances: Up to and including 3/8 inch I.D. or length - ±0.015 inch. Above 3/8 inch I.D. or length - ±0.010 inch

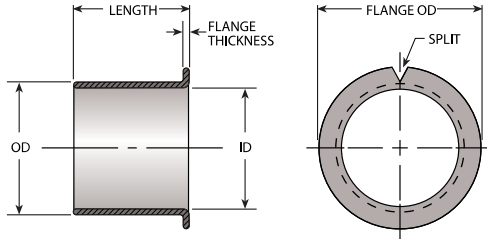
Special Lengths: In addition to the lengths listed, NU bearings of over 2 inch I.D. or larger can be supplied in any desired length from 0.5 to 6 inches.

Special Diameters: NU bearings can be produced in any diameter 1/8 inch and over, and up to 6 inches in length. In addition, NU bearings with heavier or thinner walls than shown can be furnished.

NU Inch Flanged Bearings



Reliable.
Responsive.
Relentless.



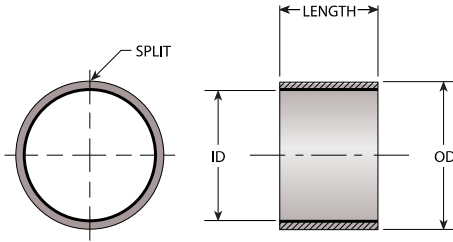
NOMINAL BEARING BORE ID	RECOMMENDED		INSTALLED BEARING ID	NOMINAL FLANGE OD	FLANGE THICKNESS	BEARING LENGTH	PART NUMBER	BEARING LENGTH	PART NUMBER	BEARING LENGTH	PART NUMBER	BEARING LENGTH	PART NUMBER
	SHAFT DIA	HOUSING DIA											
3/8	.3750 .3740	.4684 .4691	.3742 .3779	11/16	.052 .044	1/4	06FNU04	3/8	06FNU06	1/2	06FNU08	3/4	06FNU12
1/2	.5000 .4990	.5934 .5941	.5002 .5029	13/16	.052 .044	1/4	08FNU04	3/8	08FNU06	1/2	08FNU08	3/4	08FNU12
5/8	.6250 .6240	.7184 .7192	.6252 .6280	15/16	.052 .044	3/8	10FNU06	1/2	10FNU08	5/8	10FNU10	3/4	10FNU12
3/4	.7500 .7488	.8747 .8755	.7502 .7534	1 1/8	.068 .060	3/8	12FNU06	1/2	12FNU06	3/4	12FNU12	1	12FNU16
7/8	.8750 .8738	.9997 1.0005	.8752 .8784	1 1/4	.068 .060	1/2	14FNU08	3/4	14FNU12	1	14FNU16	1 1/4	14FNU20
1	1.0000 .9988	1.1247 1.1255	1.0002 1.0034	1 3/8	.068 .060	1/2	16FNU08	3/4	16FNU12	1	16FNU16	1 1/4	16FNU20
1 1/4	1.2500 1.2484	1.4058 1.4068	1.2502 1.2540	1 3/4	.083 .075	1	20FNU16	1 1/4	20NU20	1 1/2	20FNU24		
1 1/2	1.5000 1.4984	1.6558 1.6568	1.5002 1.5040	2	.083 .075	1	24FNU16	1 1/2	24FNU24	2	24FNU32		
1 3/4	1.7500 1.7484	1.9371 1.9381	1.7502 1.7548	2 3/8	.098 .090	1	28FNU16	1 1/2	28FNU24	2	28FNU32		

*When installed in a rigid steel or cast-iron housing

NU Inch Over 2" Bore



Reliable.
Responsive.
Relentless.



NOMINAL BEARING BORE ID	RECOMMENDED		INSTALLED BEARING ID*	BEARING LENGTH	PART NUMBER	BEARING LENGTH	PART NUMBER	BEARING LENGTH	PART NUMBER	BEARING LENGTH	PART NUMBER	BEARING LENGTH	PART NUMBER
	SHAFT DIA	HOUSING DIA											
2 1/8	2.1257 2.1239	2.3118 2.3130	2.1262 2.1326	3	34NU48								
2 1/4	2.2507 2.2489	2.4365 2.4377	2.2509 2.2573	1 3/4	36NU28	2	36NU32	2 1/2	36NU40	3	36NU48	3 1/2	36NU56
2 1/2	2.5011 2.4993	2.6869 2.6881	2.5013 2.5077	1	40NU16	1 5/8	40NU26	2	40NU32	2 1/2	40NU40	3	40NU48
2 3/4	2.7500 2.7482	2.9358 2.9370	2.7502 2.7566	2	44NU32	2 1/4	44NU36	2 1/2	44NU40	3	44NU48	3 1/2	44NU56
2 7/8	2.8752 2.8734	3.0610 3.0623	2.8754 2.8819	2	46NU32	2 1/4	46NU36	2 1/2	46NU40	3	46NU48	3 1/2	46NU56
3	3.0000 2.9982	3.1858 3.1872	3.0002 3.0068	2	48NU32	2 1/4	48NU36	2 1/2	48NU40	3	48NU48	3 1/2	48NU56
3 1/4	3.2500 3.2480	3.4358 3.4372	3.2502 3.2568	2	52NU32	2 3/8	52NU38	2 1/2	52NU40	3	52NU48	3 1/2	52NU56
3 1/2	3.5000 3.4978	3.6858 3.6872	3.5002 3.5068	2	56NU32	2 3/8	56NU38	2 1/2	56NU40	3	56NU48	3 1/2	56NU56
3 5/8	3.6250 3.6228	3.8108 3.8122	3.6252 3.6318	2	58NU32	2 1/4	58NU36	2 1/2	58NU40	3	58NU48	3 1/2	58NU56
3 3/4	3.7500 3.7478	3.9358 3.9372	3.7502 3.7568	2	60NU32	2 1/4	60NU36	2 1/2	60NU40	3	60NU48	3 1/2	60NU56
4	4.0000 3.9978	4.1858 4.1872	4.0002 4.0068	2	64NU32	2 1/4	64NU36	2 1/2	64NU40	3	64NU48	3 1/2	64NU56
4 1/4	4.2500 4.2478	4.4358 4.4372	4.2502 4.2568	2	68NU32	2 1/4	68NU36	2 1/2	68NU40	3	68NU48	3 1/2	68NU56
4 3/8	4.3750 4.3728	4.5608 4.5622	4.3752 4.3818	2	70NU32	2 1/4	70NU36	2 1/2	70NU40	3	70NU48	3 1/2	70NU56
4 1/2	4.5000 4.4978	4.6858 4.6872	4.5002 4.5068	2	72NU32	2 1/4	72NU36	2 1/2	72NU40	3	72NU48	3 1/2	72NU56
4 3/4	4.7500 4.7475	4.9358 4.9374	4.7502 4.7572	2	76NU32	2 1/4	76NU36	2 1/2	76NU40	3	76NU48	3 1/2	76NU56
5	4.9986 4.9961	5.1844 5.1860	4.9988 5.0056	2	80NU32	2 1/4	80NU36	2 1/2	80NU40	3	80NU48	3 1/2	80NU56
5 1/4	5.2500 5.2475	5.4358 5.4374	5.2502 5.2570	2	84NU32	2 1/4	84NU36	2 1/2	84NU40	3	84NU48	3 1/2	84NU56
5 1/2	5.5000 5.2975	5.6858 5.6874	5.5002 5.5070	2	88NU32	2 1/4	88NU36	2 1/2	88NU40	3	88NU48	3 1/2	88NU56
5 3/4	5.7500 5.7475	5.9358 5.9374	5.7502 5.7570	2	92NU32	2 1/4	92NU36	2 1/2	92NU40	3	92NU48	3 1/2	92NU56
6	6.0000 5.9975	6.1858 6.1874	6.0002 6.0070	2	96NU32	2 1/4	96NU36	2 1/2	96NU40	3	96NU48	3 1/2	96NU56
6 1/4	6.2500 6.2475	6.4358 6.4374	6.2502 6.2570	2	100NU32	2 1/4	100NU36	2 1/2	100NU40	3	100NU48	3 1/2	100NU56
6 1/2	6.5000 6.4975	6.6858 6.6874	6.5002 6.5070	2	104NU32	2 1/4	104NU36	2 1/2	104NU40	3	104NU48	3 1/2	104NU56
6 3/4	6.7500 6.7475	6.9358 6.9374	6.7502 6.7570	2	108NU32	2 1/4	108NU36	2 1/2	108NU40	3	108NU48	3 1/2	108NU56
7	6.9954 6.9929	7.1812 7.1830	6.9956 7.0026	2	112NU32	2 1/4	112NU36	2 1/2	112NU40	3	112NU48	3 1/2	112NU56

*When installed in a rigid steel or cast-iron housing

Length Tolerances: Up to and including 3/8 inch I.D. or length – ±0.015 inch. Above 3/8 inch I.D. or length – ±0.010 inch

Special Lengths: In addition to the lengths listed, NU bearings of over 2 inch I.D. or larger can be supplied in any desired length from 0.5 to 6 inches.

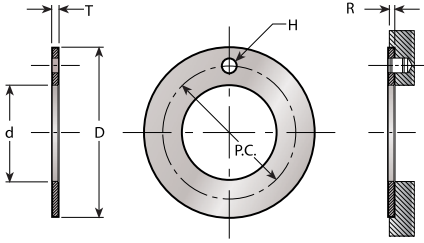
Special Diameters: NU bearings can be produced in any diameter 1/8 inch and over, and up to 6 inches in length. In addition, NU bearings with heavier or thinner walls than shown can be furnished.

	BEARING LENGTH	PART NUMBER	BEARING LENGTH	PART NUMBER	BEARING LENGTH	PART NUMBER	BEARING LENGTH	PART NUMBER	BEARING LENGTH	PART NUMBER
	3 ¾	36NU60	4	36NU64	4 ½	36NU72				
	3 ½	40NU56	3 ¾	40NU56	4	40NU64	4 ½	40NU72	4 ¾	40NU76
	3 ¾	44NU60	4	44NU64	4 ½	44NU72	4 ¾	44NU76	5	44NU80
	3 ¾	46NU60	4	46NU64	4 ½	46NU72	4 ¾	46NU76	5	46NU80
	3 ¾	48NU60	4	48NU64	4 ½	48NU72	4 ¾	48NU76	5	48NU80
	3 ¾	52NU60	4	52NU64	4 ½	52NU72	4 ¾	52NU76	5	52NU80
	3 ¾	52NU60	4	56NU64	4 ½	56NU72	4 ¾	56NU76	5	56NU80
	3 ¾	58NU60	4	58NU64	4 ½	58NU72	4 ¾	58NU76	5	58NU80
	3 ¾	60NU60	4	60NU64	4 ½	60NU72	4 ¾	60NU76	5	60NU80
	3 ¾	64NU60	4	64NU64	4 ½	64NU72	4 ¾	64NU76	5	64NU80
	3 ¾	68NU60	4	68NU64	4 ½	68NU72	4 ¾	68NU76	5	68NU80
	3 ¾	70NU60	4	70NU64	4 ½	70NU72	4 ¾	70NU76	5	70NU80
	3 ¾	72NU60	4	72NU64	4 ½	72NU72	4 ¾	72NU76	5	72NU80
	3 ¾	76NU60	4	76NU64	4 ½	76NU72	4 ¾	76NU76	5	76NU80
	3 ¾	80NU60	4	80NU64	4 ½	80NU72	4 ¾	80NU76	5	80NU80
	3 ¾	84NU60	4	84NU64	4 ½	84NU72	4 ¾	84NU76	5	84NU80
	3 ¾	88NU60	4	88NU64	4 ½	88NU72	4 ¾	88NU76	5	88NU80
	3 ¾	92NU60	4	92NU64	4 ½	92NU72	4 ¾	92NU76	5	92NU80
	3 ¾	96NU60	4	96NU64	4 ½	96NU72	4 ¾	96NU76	5	96NU80
	3 ¾	100NU60	4	100NU64	4 ½	100NU72	4 ¾	100NU76	5	100NU80
	3 ¾	104NU60	4	104NU64	4 ½	104NU72	4 ¾	104NU76	5	104NU80
	3 ¾	108NU60	4	108NU64	4 ½	108NU72	4 ¾	108NU76	5	108NU80
	3 ¾	112NU60	4	112NU64	4 ½	112NU72	4 ¾	112NU76	5	112NU80

NU Inch Thrust Washers



Reliable.
Responsive.
Relentless.



PART NUMBER	INSIDE DIA +.010 d	OUTSIDE DIA -.010 D	THICKNESS +.0020 T	DOWEL HOLE		HOUSING RECESS DEPTH +.010 R
				DIA +.010 H	P.C. DIA -.010 P.C.	
W06NU	.500	.875	.0585	.067	.692	.040
W07NU	.562	1.000	.0585	.067	.786	.040
W08NU	.625	1.125	.0585	.099	.880	.040
W09NU	.687	1.187	.0585	.099	.942	.040
W10NU	.750	1.250	.0585	.099	1.005	.040
W11NU	.812	1.375	.0585	.099	1.099	.040
W12NU	.875	1.500	.0585	.130	1.192	.040
W13NU	.937	1.625	.0585	.130	1.286	.040
W14NU	1.000	1.750	.0585	.130	1.380	.040
W16NU	1.125	2.000	.0585	.161	1.567	.040
W18NU	1.250	2.125	.0585	.161	1.692	.040
W20NU	1.375	2.250	.0585	.161	1.817	.040
W22NU	1.500	2.500	.0585	.192	2.005	.040
W24NU	1.625	2.625	.0585	.192	2.130	.040
W26NU	1.750	2.750	.0585	.192	2.255	.040
W28NU	2.000	3.000	.0895	.192	2.505	.070
W30NU	2.125	3.125	.0895	.192	2.630	.070
W32NU	2.250	3.250	.0895	.192	2.755	.070

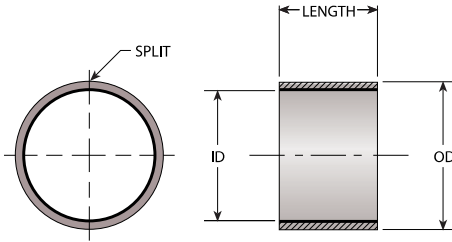


NU Metric

Up to 45mm Bore



Reliable.
Responsive.
Relentless.



NOMINAL BEARING BORE ID	RECOMMENDED		INSTALLED BEARING ID*	BEARING LENGTH	PART NUMBER	BEARING LENGTH	PART NUMBER	BEARING LENGTH	PART NUMBER	BEARING LENGTH	PART NUMBER	BEARING LENGTH	PART NUMBER	BEARING LENGTH	PART NUMBER
	SHAFT DIA	HOUSING DIA													
2	2.000 1.994	3.500 3.508	2.000 2.048	3	MB 0203NU	5	MB 0205NU								
3	3.000 2.994	4.500 4.508	3.000 3.048	3	MB 0303NU	5	MB 0305NU	6	MB 0306NU						
4	4.000 3.992	5.500 5.508	4.000 4.048	3	MB 0403NU	4	MB 0404NU	6	MB 0406NU	10	MB 0410NU				
5	4.990 4.978	7.000 7.015	4.990 5.055	5	MB 0505NU	8	MB 0508NU	10	MB 0510NU						
6	5.990 5.978	8.000 8.015	5.990 6.055	6	MB 0606NU	8	MB 0608NU	10	MB 0610NU						
7	6.987 6.972	9.000 9.015	6.990 7.055	10	MB 0710NU										
8	7.987 7.972	10.000 10.015	7.990 8.055	8	MB 0808NU	10	MB 0810NU	12	MB 0812NU						
10	9.987 9.972	12.000 12.018	9.990 10.058	8	MB 1008NU	10	MB 1010NU	12	MB 1012NU	15	MB 1015NU	20	MB 1020NU		
12	11.984 11.966	14.000 14.018	11.990 12.058	8	MB 1208NU	10	MB 1210NU	12	MB 1212NU	15	MB 1215NU	20	MB 1220NU	25	MB 1225NU
13	12.984 12.966	15.000 15.018	12.990 13.058	10	MB 1310NU	20	MB 1320NU								
14	13.984 13.966	16.000 16.018	13.990 14.058	5	MB 1405NU	10	MB 1410NU	12	MB 1412NU	15	MB 1415NU	20	MB 1420NU	25	MB 1425NU
15	14.984 14.966	17.000 17.018	14.990 15.058	10	MB 1510NU	12	MB 1512NU	15	MB 1515NU	20	MB 1520NU	25	MB 1525NU		
16	15.984 15.966	18.000 18.018	15.990 16.058	10	MB 1610NU	12	MB 1612NU	15	MB 1615NU	20	MB 1620NU	25	MB 1625NU		
17	16.984 16.966	19.000 19.021	16.990 17.061	20	MB 1720NU										
18	17.984 17.966	20.000 20.021	17.990 18.061	15	MB 1815NU	20	MB 1820NU	25	MB 1825NU						
20	19.980 19.959	23.000 23.021	19.990 20.062	10	MB 2010NU	15	MB 2015NU	20	MB 2020NU	25	MB 2005NU	30	MB 2030NU		
22	21.980 21.959	25.000 25.021	21.990 22.071	15	MB 2215NU	20	MB 2220NU	25	MB 2225NU	30	MB 2230NU				
24	23.980 23.959	27.000 27.021	23.990 24.071	15	MB 2415NU	20	MB 2420NU	25	MB 2425NU	30	MB 2430NU				
25	24.980 24.959	28.000 28.021	24.990 25.071	15	MB 2515NU	20	MB 2520NU	25	MB 2525NU	30	MB 2530NU	50	MB 2550NU		
28	27.980 27.959	32.000 32.025	27.990 28.085	15	MB 2815NU	20	MB 2820NU	25	MB 2825NU	30	MB 2830NU				
30	29.980 29.959	34.000 34.025	29.990 30.085	15	MB 3015NU	20	MB 3020NU	25	MB 3025NU	30	MB 3030NU	40	MB 3040NU		
32	31.975 31.950	36.000 36.025	31.990 32.085	20	MB 3220NU	30	MB 3230NU	40	MB 3240NU						
35	34.975 34.950	39.000 39.025	34.990 35.085	20	MB 3520NU	30	MB 3530NU	35	MB 3535NU	40	MB 3540NU	50	MB 3550NU		
37	36.975 36.950	41.000 41.025	36.990 37.085	20	MB 3720NU										
40	39.975 39.950	44.000 44.025	39.990 40.085	20	MB 4020NU	30	MB 4030NU	40	MB 4040NU	50	MB 4050NU				
45	44.975 44.950	50.000 50.025	44.990 45.105	20	MB 4520NU	30	MB 4530NU	40	MB 4540NU	45	MB 4545NU	50	MB 4550NU		

*When installed in a rigid steel or cast-iron housing

Length Tolerances: Up to and including 10 mm I.D. or length – ±0.38. Above 10 mm I.D. or length – ±0.25 mm.

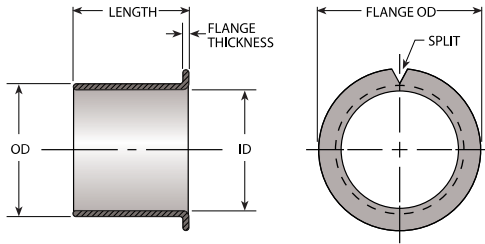
Special Lengths: In addition to the lengths listed, NU bearings of over 50mm I.D. or larger can be supplied in any desired length from 13 to 150 mm.

Special Diameters: NU bearings can be produced in any diameter from 3 mm and over, and up to 150 mm in length. In addition, NU bearings with heavier or thinner walls than shown can be furnished.

NU Metric Flanged Bearings



Reliable.
Responsive.
Relentless.



NOMINAL BEARING BORE ID	RECOMMENDED		INSTALLED BEARING ID*	NOMINAL FLANGE OD	FLANGE THICKNESS	BEARING LENGTH	PART NUMBER	BEARING LENGTH	PART NUMBER	BEARING LENGTH	PART NUMBER	BEARING LENGTH	PART NUMBER
	SHAFT DIA	HOUSING DIA											
6	5.990 5.978	8.000 8.015	5.990 6.055	12	1.00 .80	4	FMB0604NU	8	FMB0608NU				
8	7.987 7.972	10.000 10.015	7.990 8.055	15	1.00 .80	5.5	FMB0805.5NU	7.5	FMB0807.5NU	9.5	FMB0809.5NU		
10	9.987 9.972	12.000 12.018	9.990 10.058	18	1.00 .80	7	FMB1007NU	9	FMB1009NU	12	FMB1012NU	17	FMB1017NU
12	11.984 11.966	14.000 14.018	11.990 12.058	20	1.00 .80	7	FMB1207NU	9	FMB1209NU	12	FMB1212NU	17	FMB1217NU
14	13.984 13.966	16.000 16.018	13.990 14.058	22	1.00 .80	12	FMB1412NU	17	FMB1417NU				
15	14.984 14.996	17.000 17.018	14.990 15.058	23	1.00 .80	9	FMB1509NU	12	FMB1512NU	17	FMB1517NU		
16	15.984 15.966	18.000 18.018	15.990 16.058	24	1.00 .80	12	FMB1612NU	17	FMB1617NU				
18	17.984 17.966	20.000 20.021	17.990 18.061	26	1.00 .80	12	FMB1812NU	17	FMB1817NU	22	FMB1822NU		
20	19.980 19.959	23.000 23.021	19.990 20.062	30	1.50 1.30	11.5	FMB2011.5NU	16.5	FMB2016.5NU	21.5	FMB2021.5NU		
25	24.980 24.959	28.000 28.021	24.990 25.071	35	1.50 1.30	11.5	FM2511.5BNU	16.5	FMB2516.5NU	21.5	FMB2521.5NU		
30	29.980 29.959	34.000 34.025	29.990 30.085	42	2.00 1.80	16	FMB3016NU	26	FMB3026NU				
35	34.975 34.950	39.000 39.025	34.990 35.085	47	2.00 1.80	16	FMB3516NU	26	FMB3526NU				
40	39.975 39.950	44.000 44.025	39.990 40.085	52	2.00 1.80	16	FMB4016NU	26	FMB4026NU				

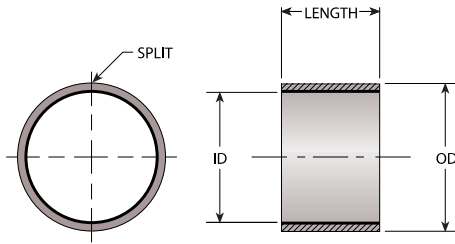
*When installed in a rigid steel or cast-iron housing

NU Metric

Over 45mm Bore



Reliable.
Responsive.
Relentless.



NOMINAL BEARING BORE ID	RECOMMENDED		INSTALLED BEARING ID*	BEARING LENGTH	PART NUMBER	BEARING LENGTH	PART NUMBER	BEARING LENGTH	PART NUMBER	BEARING LENGTH	PART NUMBER	BEARING LENGTH	PART NUMBER
	SHAFT DIA	HOUSING DIA											
50	49.975	55.000	49.990	20	MB 5020NU	30	MB 5030NU	40	MB 5040NU	50	MB 5050NU	60	MB 5060NU
	49.950	55.030	50.110										
55	54.970	60.000	54.990	20	MB 5520NU	30	MB 5530NU	40	MB 5540NU	55	MB 5555NU	60	MB 5560NU
	54.940	60.030	55.110										
60	59.970	65.000	59.990	20	MB 6020NU	30	MB 6030NU	40	MB 6040NU	60	MB 6060NU	70	MB 6070NU
	59.940	65.030	60.110										
65	64.970	70.000	64.990	30	MB 6530NU	50	MB 6550NU	70	MB 6570NU				
	64.940	70.030	65.110										
70	69.970	75.000	69.990	40	MB 7040NU	50	MB 7050NU	70	MB 7070NU				
	69.940	75.030	70.110										
75	74.970	80.000	74.990	60	MB 7560NU	80	MB 7580NU						
	74.940	80.030	75.110										
80	80.000	85.000	80.010	60	MB 8060NU	100	MB 80100NU						
	79.954	85.035	80.145										
85	85.000	90.000	85.010	30	MB 8530NU	60	MB 8560NU	100	MB 85100NU				
	84.946	90.035	85.145										
90	90.000	95.000	90.010	60	MB 9060NU	100	MB 90100NU						
	89.976	95.035	90.145										
95	95.000	100.000	95.010	60	MB 9560NU	100	MB 95100NU						
	94.946	100.035	95.145										
100	100.000	105.000	100.010	60	MB 10060NU	115	MB 100115NU						
	99.946	105.035	100.145										
105	105.000	110.000	105.010	60	MB 10560NU	115	MB 105115NU						
	104.946	110.035	105.145										
110	110.000	115.000	110.010	60	MB 11060NU	115	MB 110115NU						
	109.946	115.035	110.145										
115	115.000	120.000	115.010	50	MB 11550NU	70	MB 11570NU						
	114.946	120.035	115.145										
120	120.000	125.000	120.048	50	MB 12050NU	60	MB 12060NU	100	MB 120100NU				
	119.946	125.040	120.220										
125	125.000	130.000	125.048	100	MB 125100NU								
	124.937	130.040	125.220										
130	130.000	135.000	130.048	60	MB 13060NU	100	MB 130100NU						
	129.937	135.040	130.220										
135	135.000	140.000	135.048	60	MB 13560NU	80	MB 13580NU						
	134.937	140.040	135.220										
140	140.000	145.000	140.048	60	MB 14060NU	100	MB 140100NU						
	139.937	145.040	140.220										
150	150.000	155.000	150.048	60	MB 15060NU	80	MB 15080NU	100	MB 150100NU				
	149.937	155.040	150.220										
160	160.000	165.000	160.048	80	MB 16080NU	100	MB 160100NU						
	159.937	165.040	160.220										
180	180.000	185.000	180.048	100	MB 180100NU								
	179.937	185.046	180.226										
200	200.000	205.000	200.048	100	MB 200100NU								
	199.928	205.046	200.226										
210	210.000	215.000	210.048	100	MB 210100NU								
	209.928	215.046	210.226										
220	220.000	225.000	220.048	100	MB 220100NU								
	219.928	225.046	220.226										
250	250.000	255.000	250.048	100	MB 250100NU								
	249.928	255.052	250.232										
300	300.000	305.000	300.048	100	MB 300100NU								
	299.919	305.052	300.232										

*When installed in a rigid steel or cast-iron housing

Length Tolerances: Up to and including 10 mm I.D. or length – ±0.38. Above 10 mm I.D. or length – ±0.25 mm.

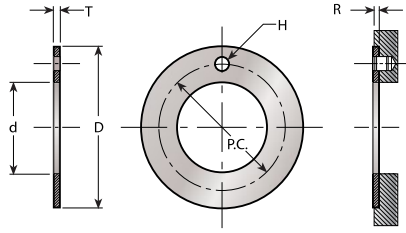
Special Lengths: In addition to the lengths listed, NU bearings of over 50mm I.D. or larger can be supplied in any desired length from 13 to 150 mm.

Special Diameters: NU bearings can be produced in any diameter from 3 mm and over, and up to 150 mm in length. In addition, NU bearings with heavier or thinner walls than shown can be furnished.

NU Metric Thrust Washers



Reliable.
Responsive.
Relentless.



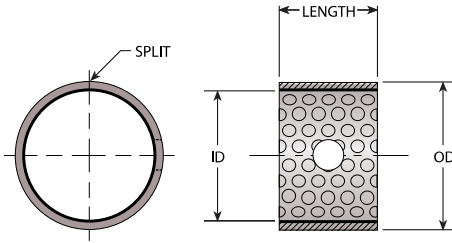
PART NUMBER	INSIDE DIA +.010 d	OUTSIDE DIA -.010 D	THICKNESS +.0020 T	DOWEL HOLE		HOUSING RECESS DEPTH +.010 R
				DIA +.010 H	P.C. DIA -.010 P.C.	
MW08NU	10.00	20.00	1.45	-	-	0.95
MW10NU	12.00	24.00	1.45	1.625	18.12	0.95
MW12NU	14.00	26.00	1.45	2.125	20.12	0.95
MW14NU	16.00	30.00	1.45	2.125	22.12	0.95
MW16NU	18.00	32.00	1.45	2.125	25.12	0.95
MW18NU	20.00	36.00	1.45	3.125	28.12	0.95
MW20NU	22.00	38.00	1.45	3.125	30.12	0.95
MW22NU	24.00	42.00	1.45	3.125	33.12	0.95
MW24NU	26.00	44.00	1.45	3.125	35.12	0.95
MW25NU	28.00	48.00	1.45	4.125	38.12	0.95
MW30NU	32.00	54.00	1.45	4.125	43.12	0.95
MW35NU	38.00	62.00	1.45	4.125	50.12	0.95
MW40NU	42.00	66.00	1.45	4.125	54.12	0.95
MW45NU	48.00	74.00	1.95	4.125	61.12	1.45
MW50NU	52.00	78.00	1.95	4.125	65.12	1.45
MW60NU	62.00	90.00	1.95	4.125	76.12	1.45

NX Inch

Up to 3" Bore



Reliable.
Responsive.
Relentless.



NOMINAL BEARING BORE ID	RECOMMENDED		INSTALLED BEARING ID"	BEARING LENGTH	PART NUMBER	BEARING LENGTH	PART NUMBER	BEARING LENGTH	PART NUMBER	BEARING LENGTH	PART NUMBER
	SHAFT DIA	HOUSING DIA									
1/2	.5000 .4990	.3645 .6352	.5007 .5038	3/8	08NX06	1	08NX08				
5/8	.6250 .6240	.7596 .7604	.6258 .6290	5/8	10NX10	1	10NX12				
3/4	.7500 .7488	.8846 .8854	.7508 .7540	3/4	12NX12	1	12NX16				
7/8	.8750 .8738	1.0097 1.0105	.8759 .8791	3/4	14NX12	1	14NS16				
1	1.0000 0.9988	1.1348 1.1356	1.0010 1.0042	3/4	16NX12	1	16NX16				
1 1/8	1.1250 1.1238	1.2598 1.2606	1.1260 1.1292	3/4	18NX12	1	18NX16				
1 1/4	1.2500 1.2484	1.4160 1.4170	1.2512 1.2550	3/4	20NX12	1	20NX16				
1 3/8	1.3750 1.3734	1.5410 1.5420	1.3762 1.3800	1	22NX16	2	22NX24				
1 1/2	1.5000 1.4984	1.6660 1.6670	1.5012 1.5050	1	24NX16	2	24NX24	2	24NX32		
1 5/8	1.6250 1.6234	1.7910 1.7920	1.6262 1.6300	1	26NX16	2	26NX24	2	26NX32		
1 3/4	1.7500 1.7484	1.9371 1.9381	1.7515 1.7577	1	28NX16	2	28NX24	2	28NX32		
1 7/8	1.8750 1.8734	2.0621 2.0633	1.8765 1.8829	1	30NX16	2	30NX24	2	30NX32	2	30NX36
2	2.0000 1.9982	2.1871 2.1883	2.0015 2.0079	1	32NX16	2	32NX24	2	32NX32		
2 1/2	2.5000 2.4982	2.6871 2.6883	2.5015 2.5079	1 1/2	40NX24	2	40NX32	3	40NX40		
3	3.0000 2.9982	3.1875 3.1889	3.0019 3.0085	1 1/2	48NX24	2	48NX32	3	48NX40	3	48NX48

Lubrication Holes: Sizes 16NX and larger have a .3125 inch diameter hole; all other sizes have a .15625 inch diameter hole.

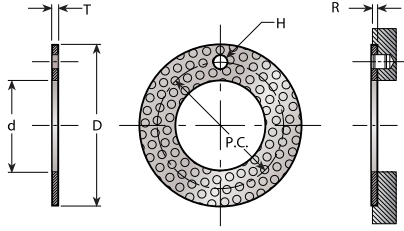
Length Tolerances: The length tolerance for all NX bearings is ± 0.010 inch.

Special Diameters and Lengths: NX bearings can be produced in any diameter from 1/2 inch to 30 inches or more, and up to 5 inches in length. Consult NP for details.

NX Inch Thrust Washers



Reliable.
Responsive.
Relentless.



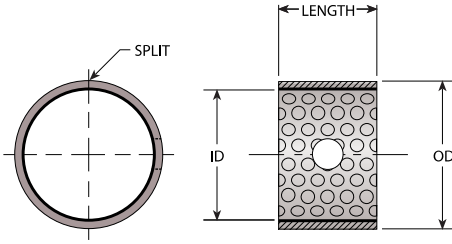
PART NUMBER	INSIDE DIA		THICKNESS +.0020	DOWEL HOLE		HOUSING RECESS DEPTH +.010
	+.010	-.010		DIA +.010	P.C. DIA -.010	
	d	D		H	P.C.	
W08NX	.625	1.125	.0660	.099	.870	.040
	.635	1.115	.0625	.109	.880	.050
W10NX	.750	1.250	.0660	.099	.995	.040
	.760	1.240	.0625	.109	1.005	.050
W12NX	.875	1.500	.0660	.130	1.182	.040
	.885	1.490	.0625	.140	1.192	.050
W14NX	1.000	1.750	.0660	.130	1.370	.040
	1.010	1.740	.0625	.140	1.380	.050
W16NX	1.125	2.000	.0660	.161	1.557	.040
	1.135	1.990	.0625	.171	1.567	.050
W18NX	1.250	2.125	.0660	.161	1.682	.040
	1.260	2.115	.0625	.171	1.692	.050
W20NX	1.375	2.250	.0660	.161	1.807	.040
	1.385	2.240	.0625	.171	1.817	.050
W22NX	1.500	2.500	.0660	.192	1.995	.040
	1.510	2.490	.0625	.202	2.005	.050
W24NX	1.625	2.625	.0660	.192	2.120	.040
	1.635	2.615	.0625	.202	2.130	.050
W26NX	1.750	2.750	.0660	.192	2.245	.040
	1.760	2.740	.0625	.202	2.255	.050
W28NX	2.000	3.000	.0930	.192	2.495	.070
	2.010	2.990	.0895	.202	2.505	.080
W30NX	2.125	3.125	.0930	.192	2.620	.070
	2.135	3.115	.0895	.202	2.630	.080
W32NX	2.250	3.250	.0930	.192	2.745	.070
	2.260	3.240	.0895	.202	2.755	.080

NX Metric

Up to 110mm Bore



Reliable.
Responsive.
Relentless.



NOMINAL BEARING BORE ID	RECOMMENDED		INSTALLED BEARING ID*	BEARING LENGTH	PART NUMBER	BEARING LENGTH	PART NUMBER	BEARING LENGTH	PART NUMBER	BEARING LENGTH	PART NUMBER	BEARING LENGTH	PART NUMBER
	SHAFT DIA	HOUSING DIA											
10	10.000 9.978	12.000 12.018	4	10	MB1010NX	15	MB1015NX	20	MB1020NX				
12	12.000 11.973	14.000 14.018	4	10	MB1210NX	15	MB1215NX	20	MB1220NX				
14	14.000 13.973	16.000 16.018	4	15	MB1415NX	20	MB1420NX						
15	15.000 14.973	17.000 17.018	4	15	MB1515NX	20	MB1520NX	25	MB1525NX				
16	16.000 15.973	18.000 18.018	4	15	MB1615NX	20	MB1620NX	25	MB1625NX				
18	18.000 17.973	20.000 20.021	4	15	MB1815NX	20	MB1820NX	25	MB1825NX				
20	20.000 19.967	23.000 23.021	4	15	MB2015NX	20	MB2020NX	25	MB2025NX	30	MB2030NX		
22	22.000 21.967	25.000 25.021	6	15	MB2215NX	25	MB2225NX						
25	25.000 24.967	28.000 28.021	6	15	MB2515NX	20	MB2520NX	25	MB2525NX	30	MB2530NX		
28	28.000 27.967	32.000 32.025	6	20	MB2820NX	30	MB2830NX						
30	30.000 29.967	34.000 34.025	6	20	MB3020NX	25	MB3025NX	30	MB3030NX	40	MB3040NX		
35	35.000 34.961	39.000 39.025	6	20	MB3520NX	30	MB3530NX	35	MB3535NX	40	MB3540NX		
40	40.000 39.961	44.000 44.025	8	20	MB4020NX	30	MB4030NX	40	MB4040NX	50	MB4050NX		
45	45.000 44.961	50.000 50.025	8	20	MB4520NX	30	MB4530NX	40	MB4540NX	45	MB4545NX	50	MB4550NX
50	50.000 49.954	55.000 55.030	8	30	MB5030NX	40	MB5040NX	50	MB5050NX	55	MB5055NX	60	MB5060NX
55	55.000 54.954	60.000 60.030	8	30	MB5530N	40	MB5540NX	50	MB5550NX	60	MB5560NX		
60	60.000 59.954	65.000 65.030	8	30	MB6030NX	40	MB6040NX	50	MB6050NX	60	MB6060NX		
65	65.000 64.954	70.000 70.030	8	40	MB6540NX	60	MB6560NX						
70	70.000 69.954	75.000 75.030	8	40	MB7040NX	50	MB7050NX	65	MB7065NX	80	MB7080NX		
75	75.000 74.954	80.000 80.030	10	40	MB7540NX	60	MB7560NX	80	MB7580NX				
80	80.000 79.954	85.000 85.035	10	40	MB8040NX	60	MB8060NX	80	MB8080NX				
85	85.000 84.946	90.000 90.035	10	40	MB8540NX	60	MB8560NX	80	MB8580NX				
90	90.000 89.946	95.000 95.035	10	40	MB9040NX	60	MB9060NX	80	MB9080NX	90	MB9090NX		
100	100.000 99.946	105.000 105.035	10	50	MB10050NX	80	MB10080NX	95	MB10095NX				
105	105.000 104.946	110.000 110.035	10	60	MB10560NX	80	MB10580NX	95	MB10595NX	110	MB105110NX		
110	110.000 109.946	115.000 115.035	10	60	MB11060NX	80	MB11080NX	95	MB11095NX	110	MB110110NX		

Length Tolerances: The length tolerance for all NX bearings is ± 0.25 mm.

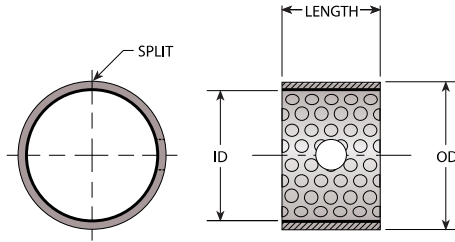
Special Diameters and Lengths: NX bearings can be produced in any diameter from 10 to 300 mm or more, and up to 150 mm in length. Consult NP for details.

NX Metric

Over 110mm Bore



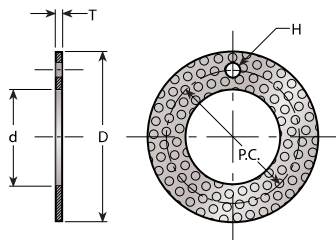
Reliable.
Responsive.
Relentless.



NOMINAL BEARING BORE ID	RECOMMENDED		INSTALLED BEARING ID*	BEARING LENGTH	PART NUMBER	BEARING LENGTH	PART NUMBER	BEARING LENGTH	PART NUMBER	BEARING LENGTH	PART NUMBER	BEARING LENGTH	PART NUMBER
	SHAFT DIA	HOUSING DIA											
120	120.000 119.946	125.000 125.035	10	60	MB12060NX	80	MB12080NX	110	MB120110NX				
125	125.000 124.937	130.000 130.040	10	60	MB12560NX	110	MB125110NX						
130	130.000 129.937	135.000 135.040	10	50	MB13050NX	60	MB13060NX	80	MB13080NX	100	MB130100NX		
140	140.000 139.937	145.000 145.040	10	50	MB14050NX	60	MB14060NX	80	MB14080NX	100	MB140100NX		
150	150.000 149.937	155.000 155.040	10	50	MB15050NX	60	MB15060NX	80	MB15080NX	100	MB150100NX		
160	160.000 159.937	165.000 165.040	11	50	MB16050NX	60	MB16060NX	80	MB16080NX	100	MB160100NX		
170	170.000 169.937	175.000 175.040	11	50	MB17050NX	80	MB17080NX	100	MB170100NX				
180	180.000 179.928	185.000 185.040	11	50	MB18050NX	60	MB18060NX	80	MB18080NX	100	MB180100NX		
190	190.000 189.928	195.000 195.046	11	50	MB19050NX	60	MB19060NX	80	MB19080NX	100	MB190100NX	120	MB190120NX
200	200.000 199.928	205.000 205.046	11	50	MB20050NX	60	MB20060NX	80	MB20080NX	100	MB20080NX	120	MB200120NX
220	220.000 219.928	225.000 225.046	12	50	MB22050NX	60	MB22060NX	80	MB22080NX	100	MB220100NX	120	MB220120NX
240	240.000 239.928	245.000 245.046	12	50	MB24050NX	60	MB24060NX	80	MB24080NX	100	MB240100NX	120	MB240120NX
250	250.000 249.919	255.000 255.052	12	50	MB25050NX	60	MB25060NX	80	MB25080NX	100	MB250100NX	120	MB250120NX
260	260.000 259.919	265.000 265.052	12	50	MB26050NX	60	MB26060NX	80	MB26080NX	100	MB260100NX	120	MB260120NX
280	280.000 279.919	285.000 285.052	12	50	MB28050NX	60	MB28060NX	80	MB28080NX	100	MB280100NX	120	MB280120NX
300	300.000 299.919	305.000 305.052	12	50	MB30050NX	60	MB30060NX	80	MB30080NX	100	MB300100NX	120	MB300120NX

NX Metric

Thrust Washers



PART NUMBER	INSIDE DIA +.010 d	OUTSIDE DIA -.010 D	THICKNESS +.0020 T	DOWEL HOLE	
				DIA +.010 H	P.C. DIA -.010 P.C.
				MW10NX	12
MW12NX	14	26	1.5	2	20
MW14NX	16	30	1.5	2	22
MW16NX	18	32	1.5	2	25
MW18NX	20	36	1.5	3	28
MW20NX	22	38	1.5	3	30
MW22NX	24	42	1.5	3	33
MW24NX	26	44	1.5	4	35
MW26NX	28	48	1.5	4	38
MW30NX	32	54	1.5	4	43
MW36NX	38	62	1.5	4	50
MW40NX	42	66	1.5	4	54
MW46NX	48	74	2	4	61
MW50NX	52	78	2	4	65

Fraction/Inch/Metric Conversion Table



Reliable.
Responsive.
Relentless.

Fraction	Inch	mm
1/64	0.0156	0.3969
	0.0250	0.6350
1/32	0.0312	0.7937
	0.0394	1.0000
	0.0400	1.0160
3/64	0.0469	1.1906
	0.0472	1.2000
	0.0550	1.3970
	0.0591	1.5000
1/16	0.0625	1.5875
	0.0709	1.8000
5/64	0.0781	1.9844
	0.0787	2.0000
	0.0906	2.3012
3/32	0.0937	2.3812
	0.0984	2.5000
	0.1000	2.5400
	0.1024	2.6000
7/64	0.1094	2.7781
	0.1100	2.7940
	0.1102	2.8000
	0.1181	3.0000
1/8	0.1250	3.1750
	0.1256	3.1902
	0.1378	3.5000
9/64	0.1406	3.5719
5/32	0.1562	3.9687
	0.1575	4.0000
11/64	0.1719	4.3656
3/16	0.1875	4.7625
	0.1892	4.8057
	0.1969	5.0000
13/64	0.2031	5.1594
	0.2165	5.4991
7/32	0.2187	5.5562
15/64	0.2344	5.9531
	0.2362	6.0000
1/4	0.2500	6.3500
17/64	0.2656	6.7469
	0.2756	7.0000
9/32	0.2812	7.1437

Fraction	Inch	mm
	0.2883	7.3228
19/64	0.2969	7.5406
5/16	0.3125	7.9375
	0.3150	8.0000
21/64	0.3281	8.3344
11/32	0.3437	8.7312
	0.3543	9.0000
23/64	0.3594	9.1281
3/8	0.3750	9.5250
25/64	0.3906	9.9213
	0.3937	10.0000
13/32	0.4062	10.3187
	0.4100	10.4140
27/64	0.4219	10.7156
	0.4250	10.7950
	0.4331	11.0000
7/16	0.4375	11.1125
29/64	0.4531	11.5094
	0.4600	11.6840
15/32	0.4687	11.9062
	0.4724	12.0000
31/64	0.4844	12.3031
1/2	0.5000	12.7000
	0.5118	13.0000
33/64	0.5156	13.0968
17/32	0.5312	13.4937
35/64	0.5469	13.8906
	0.5512	14.0000
9/16	0.5625	14.2875
37/64	0.5781	14.6844
	0.5906	15.0000
19/32	0.5937	15.0812
39/64	0.6094	15.4781
5/8	0.6250	15.8750
	0.6299	16.0000
41/64	0.6406	16.2719
	0.6500	16.5100
21/32	0.6562	16.6687
	0.6620	16.8148
	0.6693	17.0000
43/64	0.6719	17.0656

Fraction	Inch	mm
11/16	0.6875	17.4625
45/64	0.7031	17.8594
	0.7087	18.0000
23/32	0.7187	18.2562
47/64	0.7344	18.6532
	0.7435	18.8849
	0.7480	19.0000
3/4	0.7500	19.0500
49/64	0.7656	19.4469
	0.7717	19.6012
25/32	0.7812	19.8433
	0.7874	20.0000
51/64	0.7969	20.2402
13/16	0.8125	20.6375
	0.8268	21.0000
53/64	0.8281	21.0344
27/32	0.8437	21.4312
55/64	0.8594	21.8281
	0.8661	22.0000
7/8	0.8750	22.2250
57/64	0.8906	22.6219
	0.9055	23.0000
29/32	0.9062	23.0187
59/64	0.9219	23.4156
15/16	0.9375	23.8125
	0.9449	24.0000
61/64	0.9531	24.2094
31/32	0.9687	24.6062
	0.9843	25.0000
63/64	0.9844	25.0031
1	1.0000	25.4000
	1.0236	26.0000
	1.0415	26.4541
	1.0480	26.6192
	1.0630	27.0000
	1.1025	28.0000
	1.1417	29.0000
	1.1812	30.0000
1-1/4	1.2500	31.7500
1-1/2	1.5000	38.1000
	1.5354	39.0000

Fraction	Inch	mm
	1.5748	40.0000
	1.6535	42.0000
1-3/4	1.7500	44.4500
	1.7717	45.0000
	1.8898	48.0000
	1.9685	50.0000
2	2.0000	50.8000
	2.0472	52.0000
	2.1654	55.0000
	2.2047	56.0000
2-1/4	2.2500	57.1500
	2.3622	60.0000
2-1/2	2.5000	63.5000
	2.5197	64.0000
2-3/4	2.7500	69.8500
	2.8346	72.0000
	2.9528	75.0000
3	3.0000	76.2000
	3.1496	80.0000
3-1/4	3.2500	82.5500
3-1/2	3.5000	88.9000
	3.5433	90.0000
3-3/4	3.7500	95.2500
	3.9370	100.0000
4	4.0000	101.6000
4-1/4	4.2500	107.9500
	4.3307	110.0000
4-1/2	4.5000	114.3000
	4.7244	120.0000
4-3/4	4.7500	120.6500
5	5.0000	127.0000
	5.1181	130.0000
5-1/4	5.2500	133.3500
5-1/2	5.5000	139.7000
	5.5118	140.0000
5-3/4	5.7500	146.0500
	5.9055	150.0000
6	6.0000	152.4000



Reliable.
Responsive.
Relentless.

WHAT WE DO.

National Precision is a leading supplier of bearings, motion-related products, and engineered solutions for a wide range of markets, including medical, aerospace, and diversified industries. Known for our value-added solutions and technical expertise, National Precision is AS9100/ISO9001 certified, with ISO Class-6 clean room assembly and relubrication services that support the specialized needs of our customers. Since 1979, we have demonstrated our commitment to long-term relationships and the success of our customers, suppliers, and employees.



SINCE 1979

**HEADQUARTERS
PRESTON, WA**



**SERVING CLIENTS
ACROSS THE
WORLD**



OTHER PRODUCT LINES

NEEDLE ROLLER BEARINGS



SPHERICAL PLAIN BEARINGS



SLEWING RINGS



MOUNTED UNITS & INSERTS



**AVAILABLE
INVENTORY
FROM OVER 100
SUPPLIERS**



8152 304th Ave. SE
Preston, WA 98050
1.425.222.5900

MECHATRONICS CORPORATION is a privately held marketing, distribution, and manufacturing company that was founded in 1979. Today, the corporation is comprised of five operating groups that serve diverse markets located in Preston, WA.

NATIONAL PRECISION

Bearing and Motion Solutions

National Precision distributes bearings to the Aerospace, Medical, Defense, and Industrial markets.

www.nationalprecision.com
Tel: 800-426-8038



MECHATRONICS FAN GROUP

Mechatronics Fan Group manufactures AC, DC & EC cooling fans, blowers and accessories for the Electronic, Food Handling, Medical and HVAC industries.

www.mechatronics.com
Tel: 800-453-4569



SILVERTHIN

Thin, Slewing & Custom Bearing Mfg

Silverthin manufactures thin section ball bearings, slewing ring bearings and custom bearings for Industrial and Defense applications.

www.silverthin.com
Tel: 866-294-5841



MECHCONNECT

Custom Harness & Cable Assembly

MechConnect manufactures cable assemblies, complex wire harnesses, and box builds for Aerospace, Medical, Industrial, Electronic, and Food Service industries.

www.mechconnect.com
Tel: 425-441-1237



K&E AERO TOOLS

Bearing Installation, Test & Removal

K&E AERO TOOLS is a USA manufacturer of bearing installation/removal tools, proof load testing and go kits for the Aerospace market.

www.kandetools.com
Tel: 800-426-8038

